

# Door Shelfplate Drive Units

**Configuration:** For Double & Single doors

**Applications:** For entrance (front) & Exit (mid) for embark or disembark on off side or nearside of vehicle.

A, Doors that glide inboard of aperture, either finishing inside or protrude outside of vehicle.

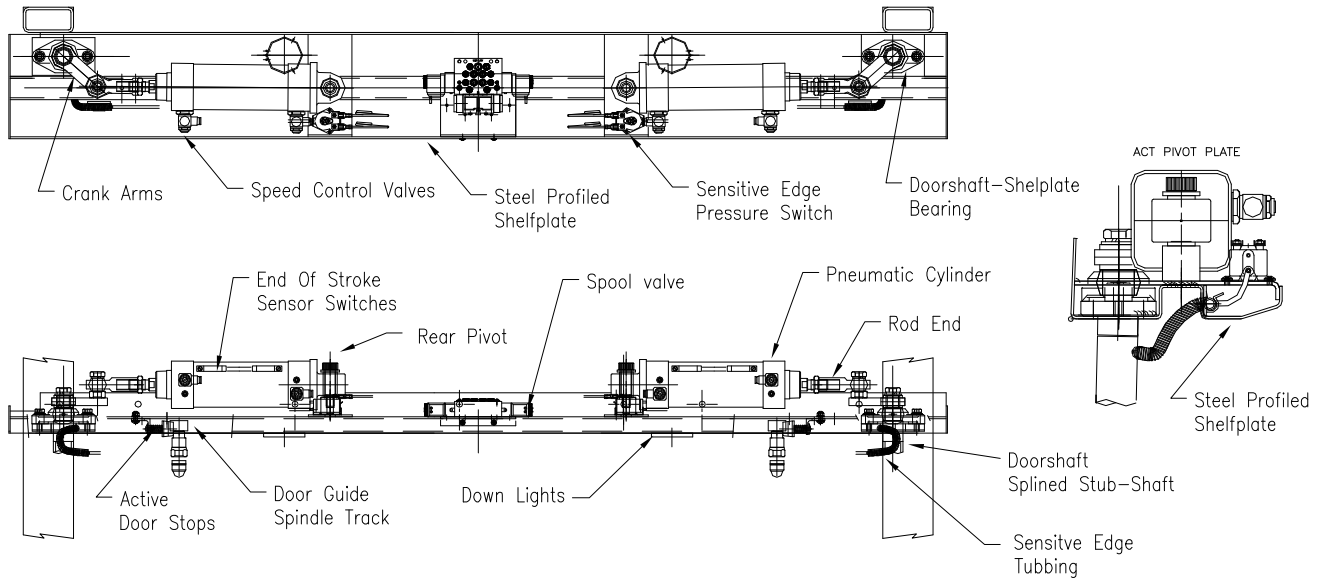
B, Doors that fold inboard of aperture, either finishing inside or protrude outside of vehicle.

C, Door will move outboard to wards the front or rear of the aperture, and finish close to side of the vehicle.

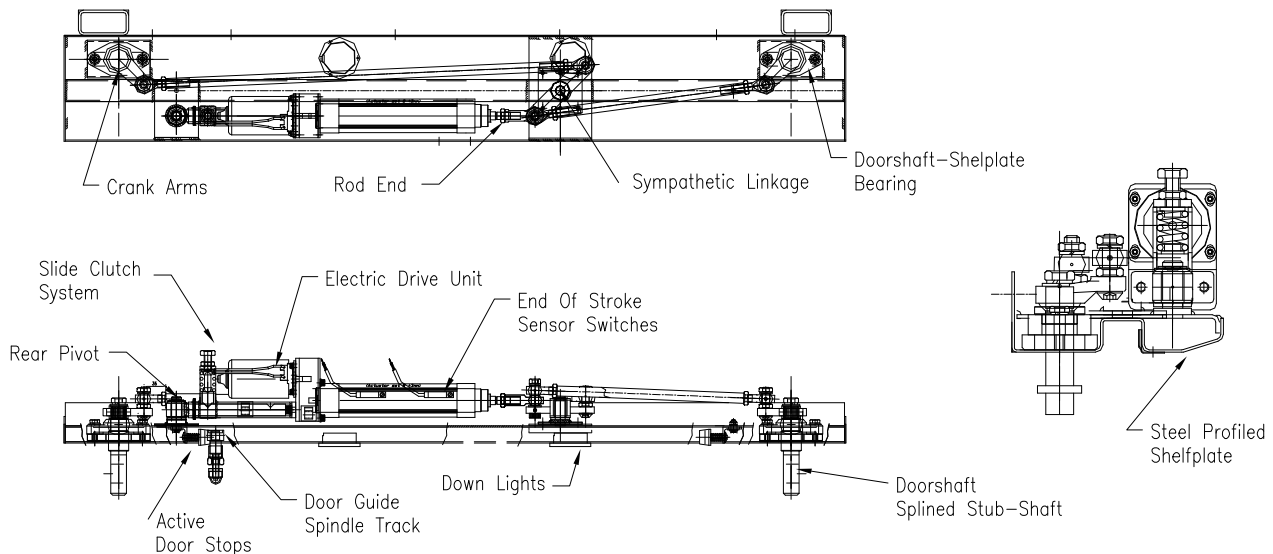
**Control Options:** Pneumatic, Electric or Manual means of operation.

**Material & Finish:** Mild steel construction & powder coated.

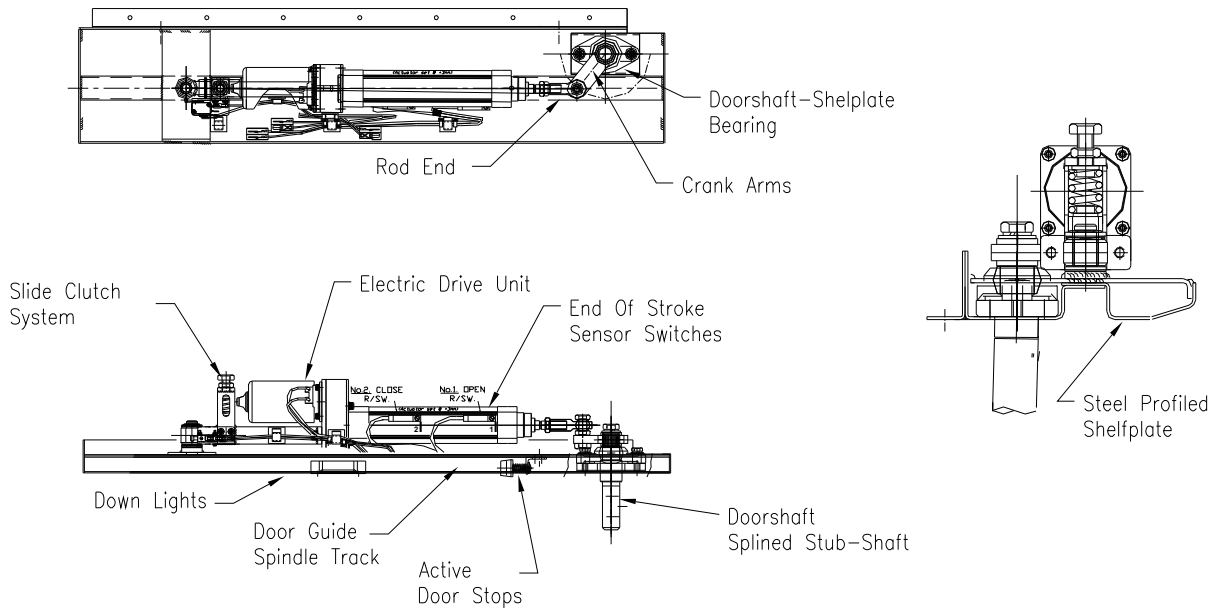
## Typical Double Door Pneumatic Drive Unit



## Typical Double Door Electric Drive Unit



## Typical Single Door Electric Drive Unit



## Typical Single Plug Door Electric Drive Unit

