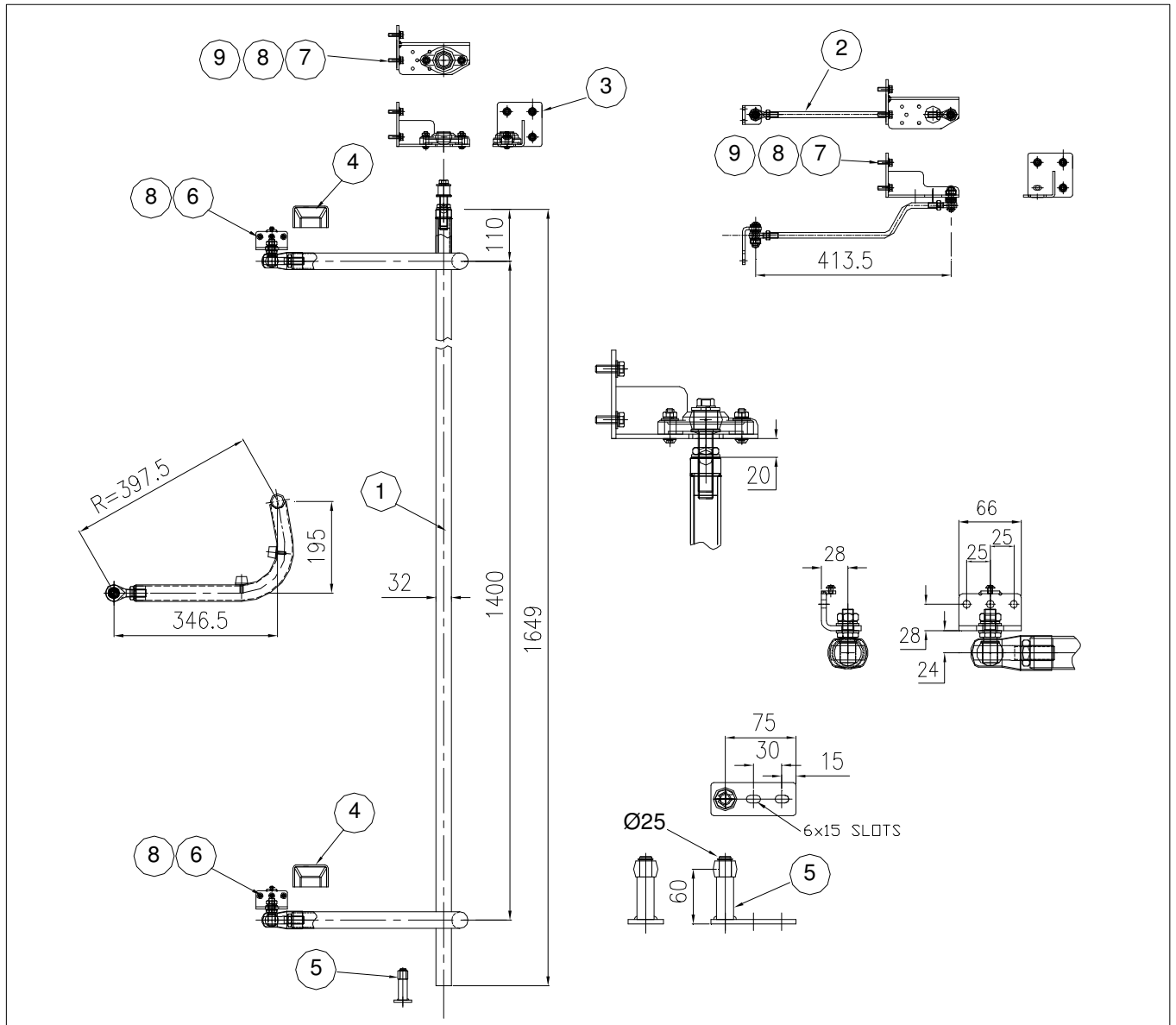
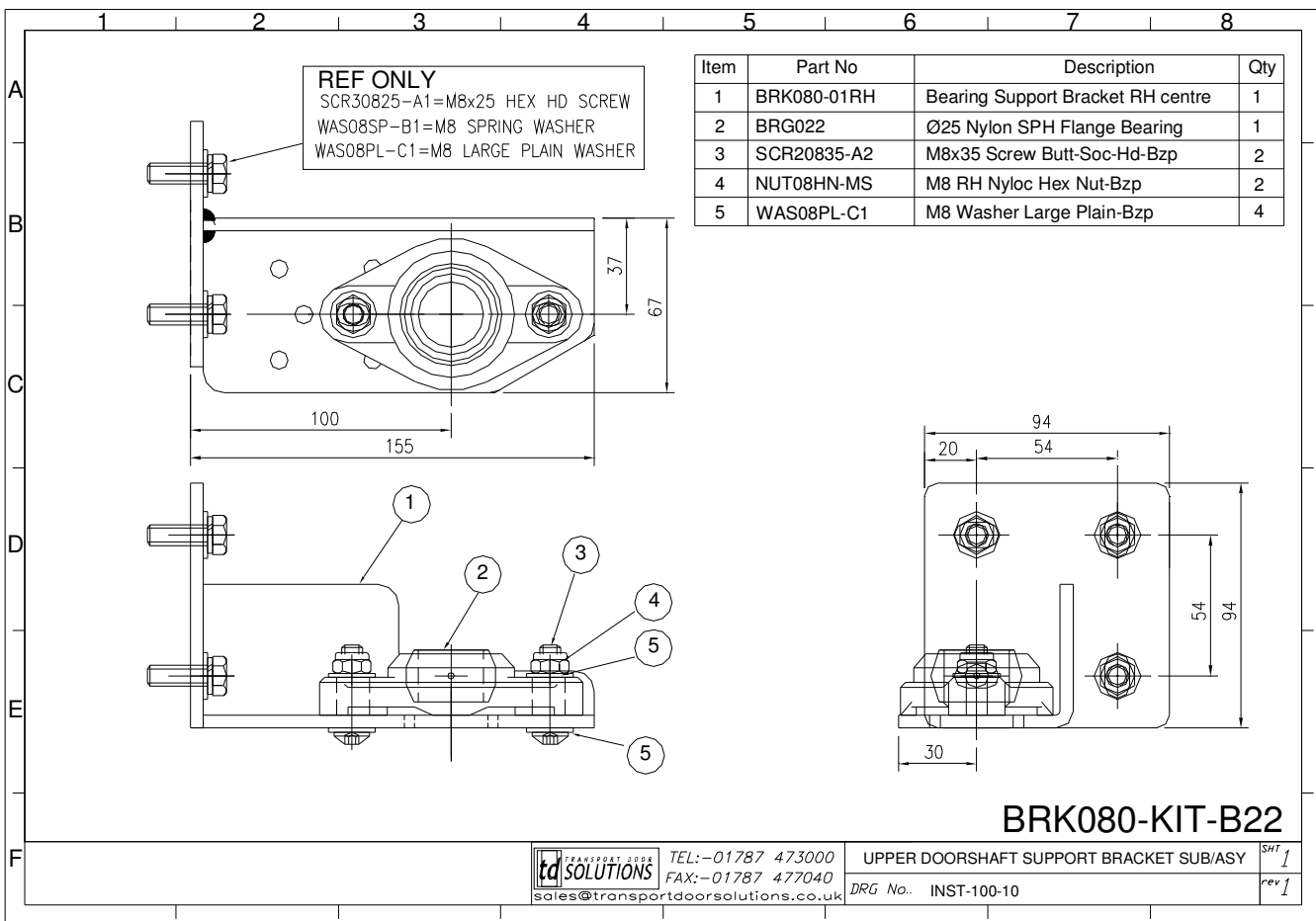
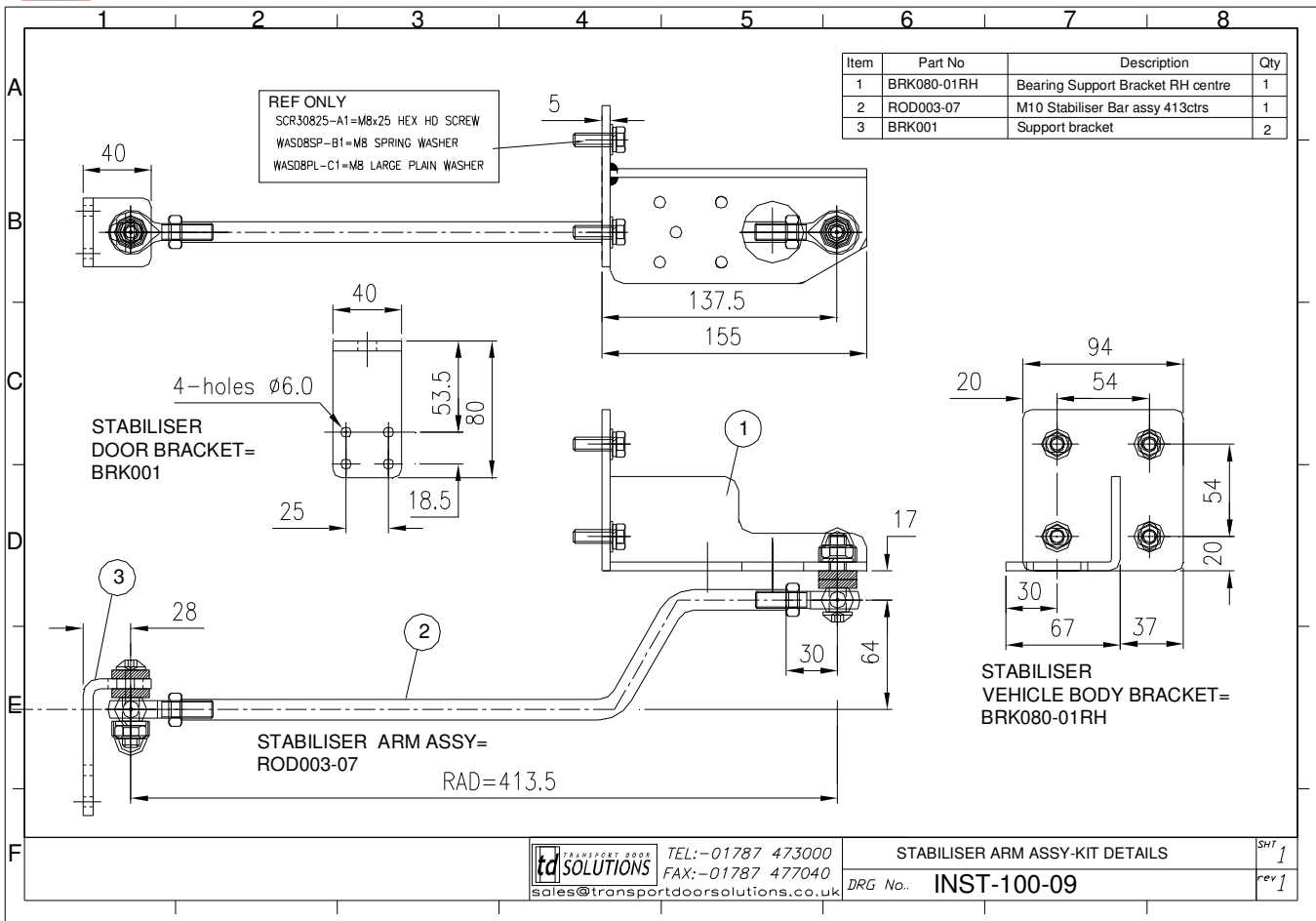
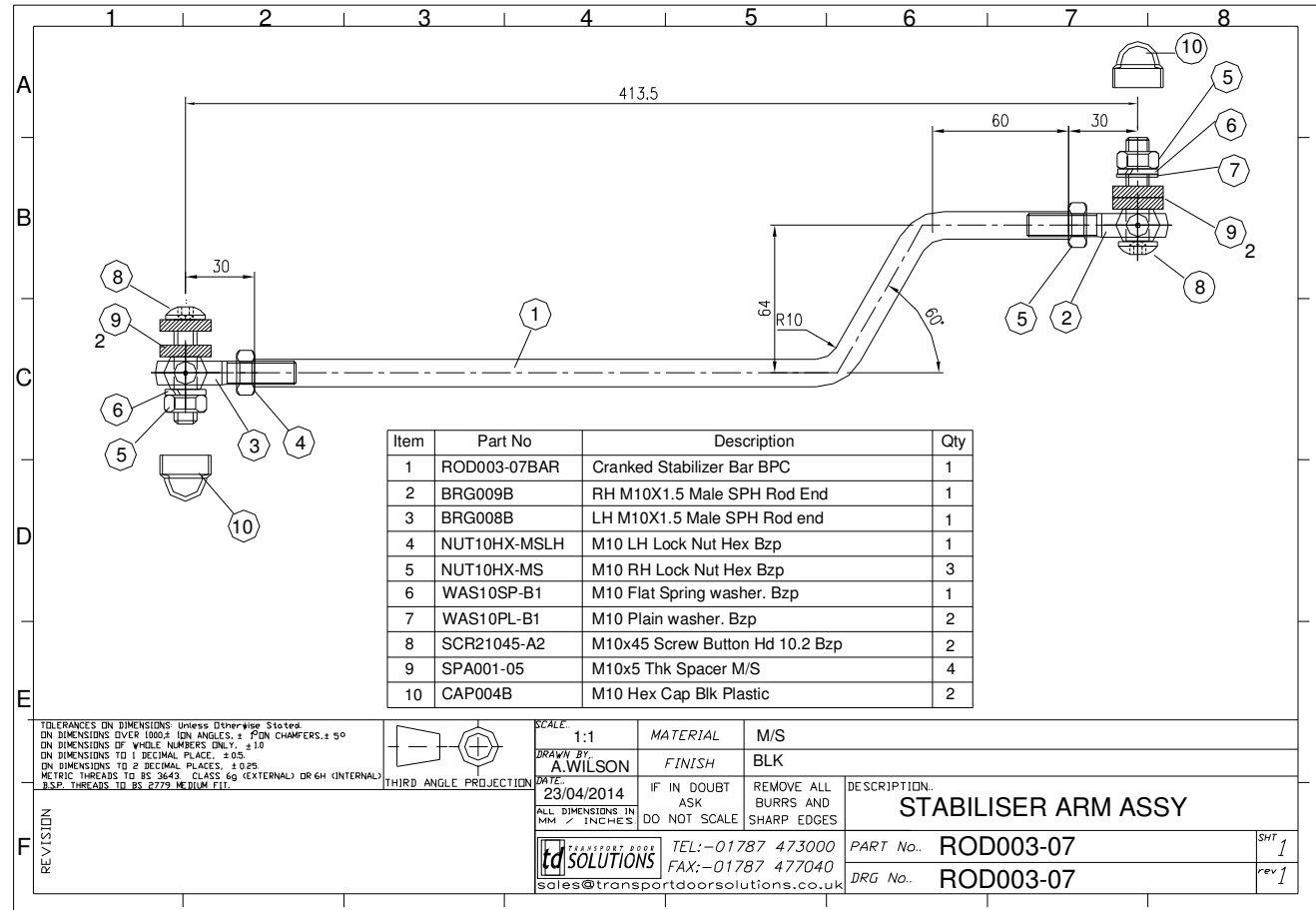
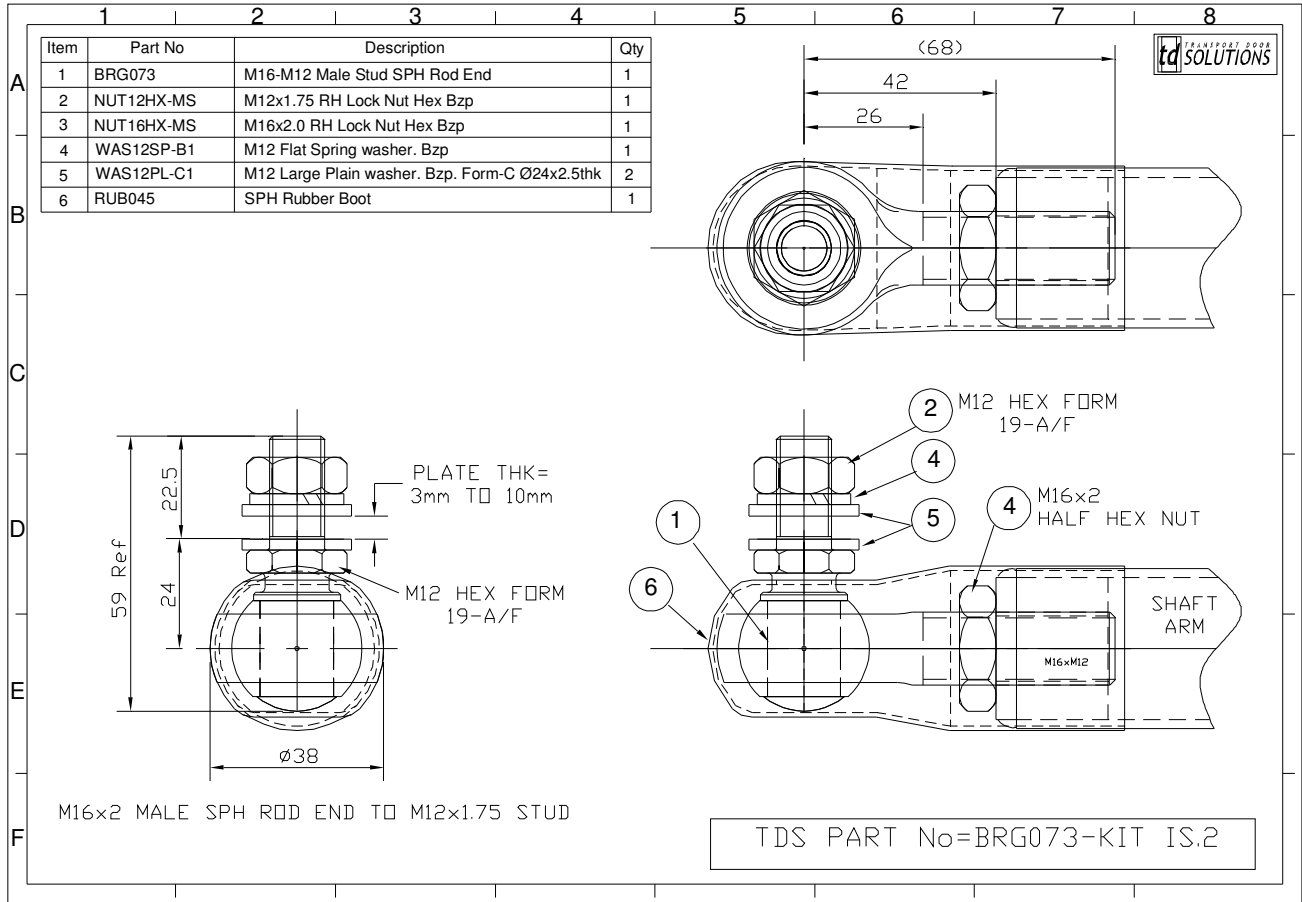


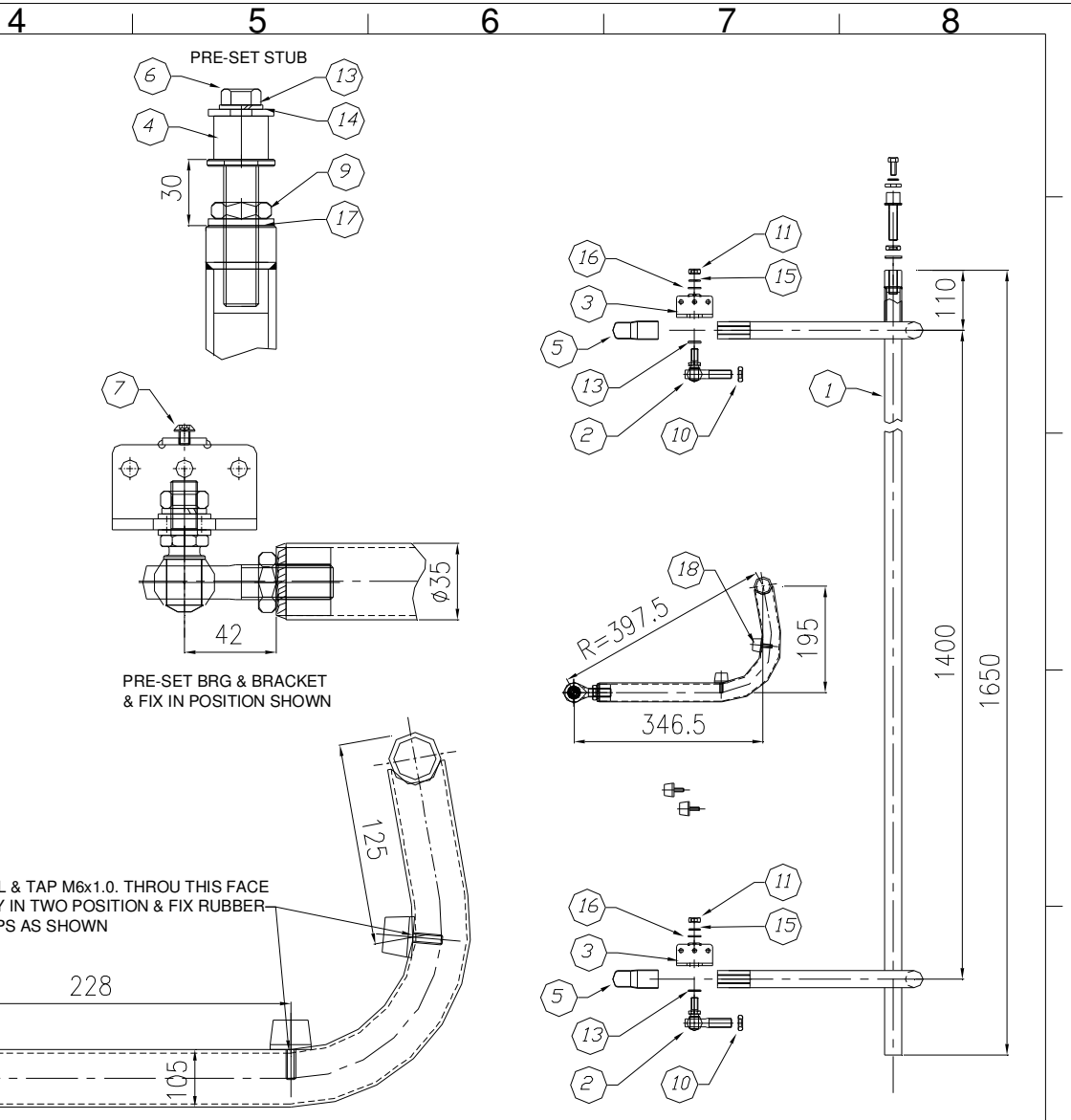
| TDS UNIT No | PLD001 | " RHD COMMUCATION VEHICLE PLUG DOOR | DATE: 23-05-2014 |
|------------------|----------------|---|-----------------------------------|
| S.WRIGHT PART No | * @ REV A | RH PLUG-DOORWING SHAFT KIT & INSTALLATION DATA | ISSUE:-A |
| DOC No | PLD001.2 | PARTS LIST REF:-PDKT001-05 | SHEET 1-8 |
| ITEM | PART NUMBER | DESCRIPTION | QTY |
| 1 | SHFT060-05 | RH DOOR-DRIVE-SHAFT PRE- ASSY SEE INSTRUCTION SHEET. INST-006-30 | 1 |
| 2 | ROD003-07-KIT | STABILISER ARM-BRKT KIT PRE-ASSY SEE INSTRUCTION SHEET. INST-100-09 | 1 |
| 3 | BRK080-KIT-B22 | UPPER DR/SHAFT SUP'T BRKT PRE--ASSY SEE INSTRUCTION SHEET. INST-100-10 | 1 |
| 4 | SAB040-45 | ABS COVER (28-PD BRACKET) | 2 |
| 5 | ASY009B | Ø25 BOTTOM BEARING ASSY | 1 |
| 6 | SCR30825-A1 | M8x20 SCREW SOC-HD-BZP | 6 |
| 7 | SCR10825-A1 | M8x25 SCREW HEX-HD-BZP | 8 |
| 8 | WAS08PL-C1 | M8 WASHER LARGE PLAIN-BZP | 8 |
| 9 | WAS08SP-B1 | M8 WASHER FLAT SPRING-BZP | 14 |
| | | | FOR UPPER MTG BRKTS & 28-PD BRKTS |



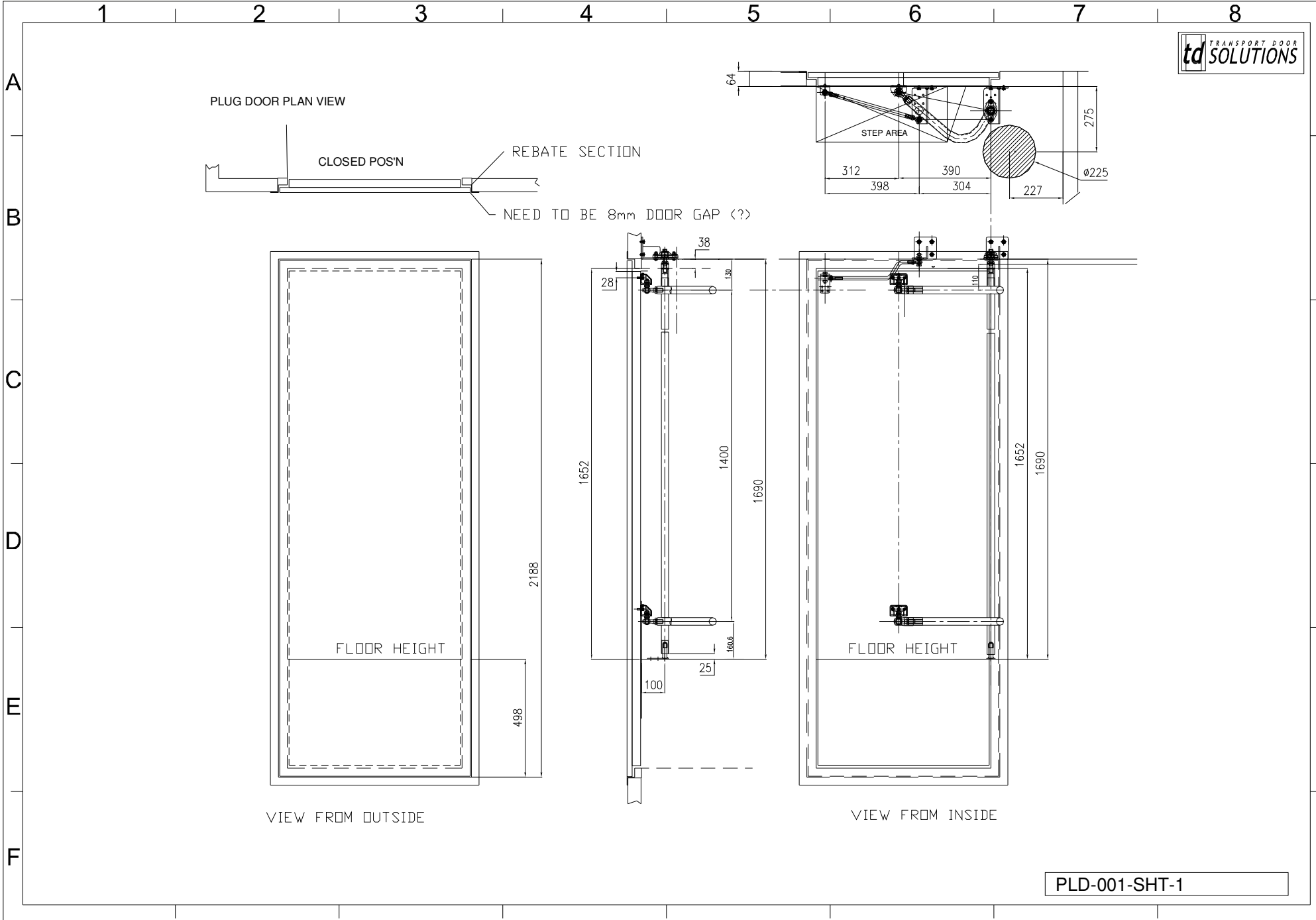




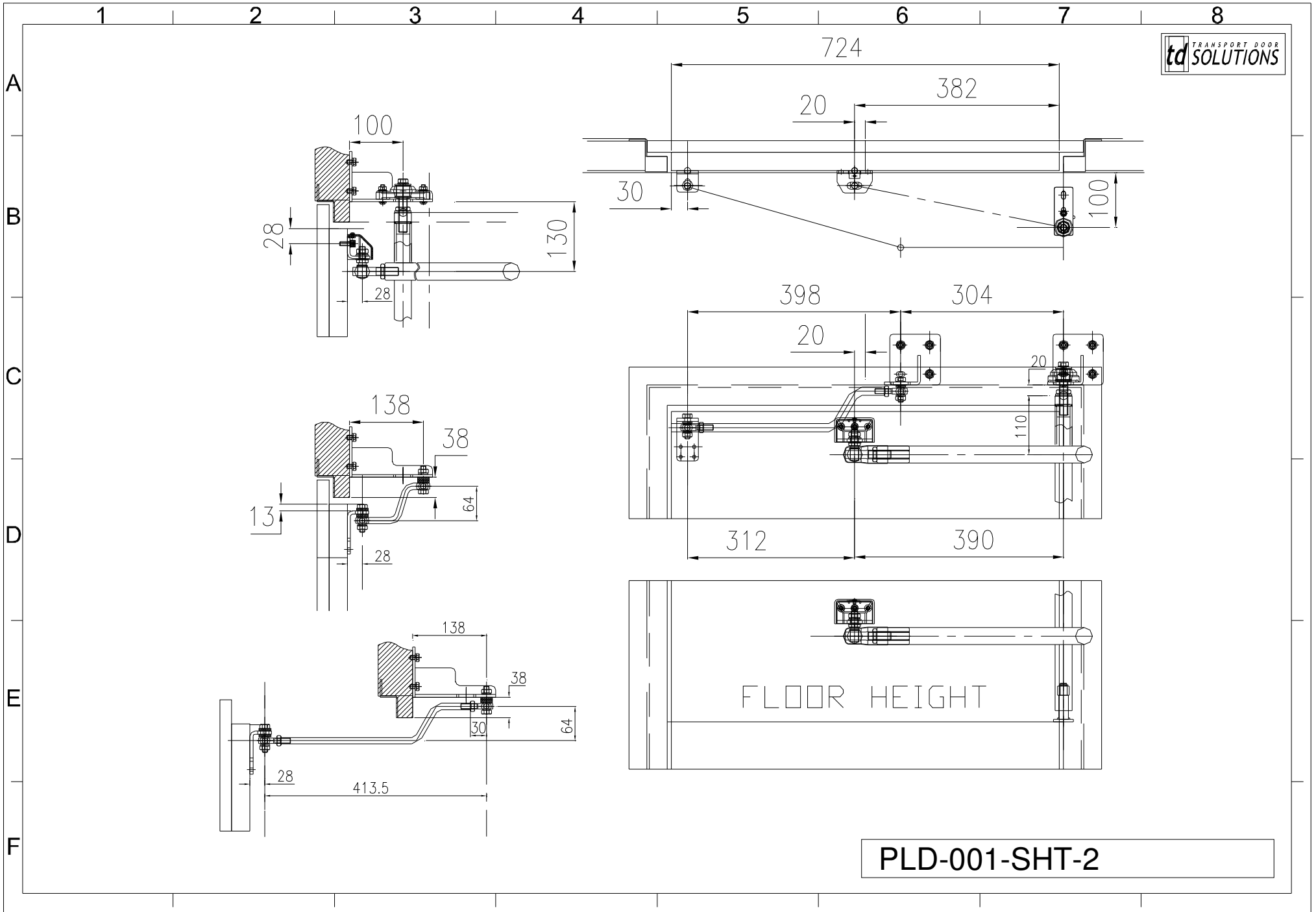
| No | PART No | DESCRIPTION | QTY |
|----|-----------------|---------------------------------------|-----|
| 1 | SHW-147-ASSY-01 | RH DOORSHAFT W/ASSY PC.BLACK 9005/30% | 1 |
| 2 | BRG073 | M16-M12 SPH STUD SPH ROD END | 2 |
| 3 | BRK070-28 | 28mm PD BRACKET | 2 |
| 4 | H047-M0D | ADJUSTABLE STUB SHAFT (M16x1.5) | 1 |
| 5 | | RUBBER BOOT | 2 |
| 6 | SCR11025-A1 | M10x25 NEX HD SCREW-BZP | 1 |
| 7 | SCR20508-A1 | M5x8 BUTT SOC HD SCREW-BZP | 2 |
| 8 | | | |
| 9 | I224 | M16x1.5 RH LOCK NUT-HEX-BZP | 1 |
| 10 | NUT16HH-MS | M16x2.0 RH LOCK NUT-HEX-BZP | 2 |
| 11 | NUT12HH-MS | M12x1.75 RH LOCK NUT-HEX-BZP | 2 |
| 12 | | | |
| 13 | WAS10SP-B1 | M10 WASHER SPRING RECT-BZP | 1 |
| 14 | | M10 WASHER LARGE DIA-BZP (H831) | 1 |
| 15 | WAS12SP-B1 | M12 WASHER SPRING RECT-BZP | 2 |
| 16 | WAS12PL-C1 | M12 WASHER PLAIN FORM-C-BZP(2.5thk) | 2 |
| 17 | WAS16PL-A1 | M16 WASHER PLAIN FORM-C-BZP(3.0thk) | 1 |
| 18 | STP002B | RUBBER STOP | 4 |
| 19 | | | |
| 20 | | | |

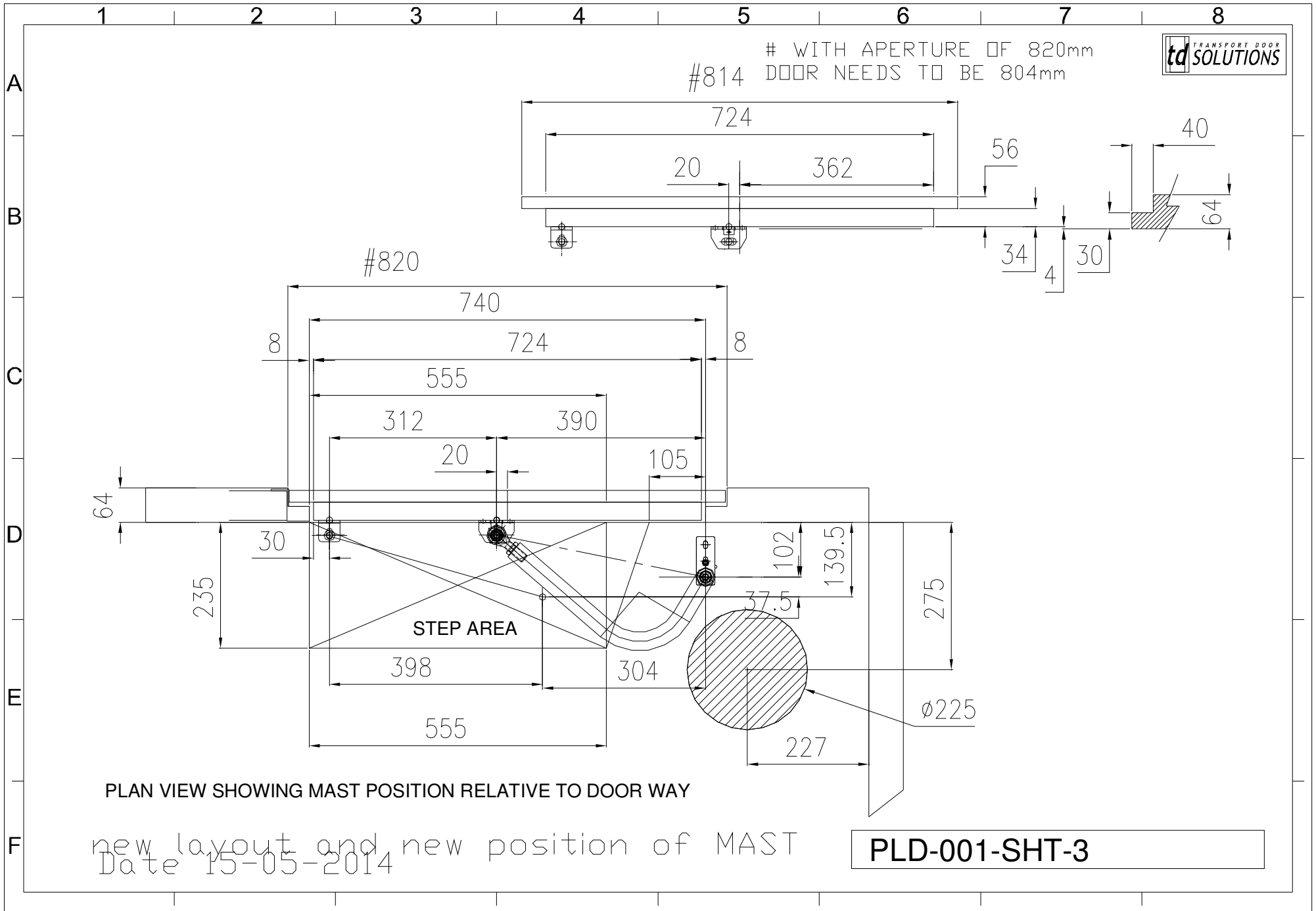


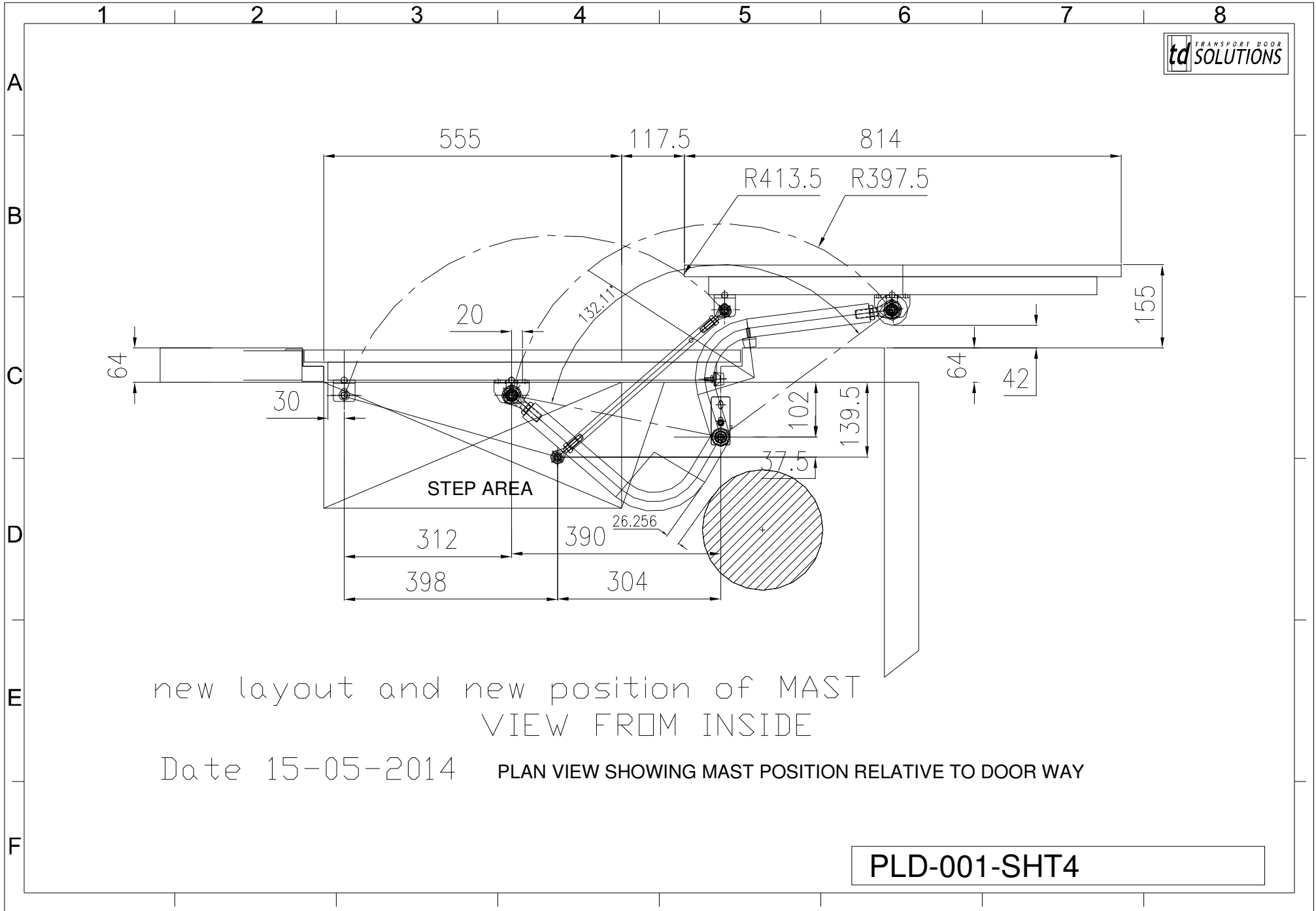
| | | | | | | | | | |
|---------------|--|---|-----------------------------------|------------------------------------|-------------------|------------------------------------|--|------------------------------|---|
| F REVISION | | TOLERANCES ON DIMENSIONS: (Unless Otherwise Stated). DIMENSIONS OVER 1000, ±1. DIMENSIONS OF WHOLE NUMBERS ONLY, ±1.0 DIMENSIONS TO 1 DECIMAL PLACE, ±0.5. ANGLES, ±1° CHAMFERS, ±3° | ALL DIMENSIONS IN MM / INCHES. | SCALE: NTS | 3rd ANGLE | IF IN DOUBT ASK DO NOT SCALE | REMOVE ALL BURRS AND SHARP EDGES | CUSTOMER...:- CUST SPEC:- | DESCRIPTION: PD RH DOORSHAFT ASSY DETAILS |
| | | | DRAWN BY A.WILSON | td SOLUTIONS | TEL:-01787 473000 | VEHICLE.....:- NOTES.....:- | | KIT PT/No SHFT060-01 | SHT 1 |
| | | | DATE: 21-05-2014 | sales@transportdoorsolutions.co.uk | FAX:-01787 477040 | | DRG No. INST-006-30 | rev 1 | |



PLD-001-SHT-1







PLD-001-SHT4

