

**Title: Maintenance of filter regulators**

1. **Purpose:** The purpose of this service instruction is to describe the maintenance required for filter regulators in all pneumatic Ventura door systems. The filter regulator is a way of checking the air quality supplied by the vehicle and therefore requires regular maintenance. How often these instructions need to be followed can be seen in the table below:

Use	Times per day open/close	Maintenance frequency
Normal	0-230	1x per year
Mid-Heavy	230-350	2x per year
Heavy	350-...	3x per year

Revision no.	Date:	Description of the change:	Name & function:
1	20-08-2014	First release	KT. Slager Technical Documentation Specialist

**Title: Maintenance of filter regulators**

**2. References:**

- 2.1. ISO 9001 (2008) §7.5.1 Control of production and service provision

**3. Definitions:**

- 3.1. None

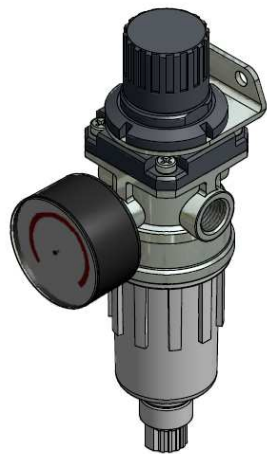
**4. Forms:**

- 4.1. None

**5. Scope:**

- 5.1. This service instruction applies to the following products:

P/N I826	Parker filter regulator
P/N K006	Parker filter regulator
P/N P560	Camozzi filter regulator
P/N Q160	Camozzi filter regulator



Camozzi filter regulator



Parker filter regulator

**6. Material/Tools:**

- 6.1. No tools required.

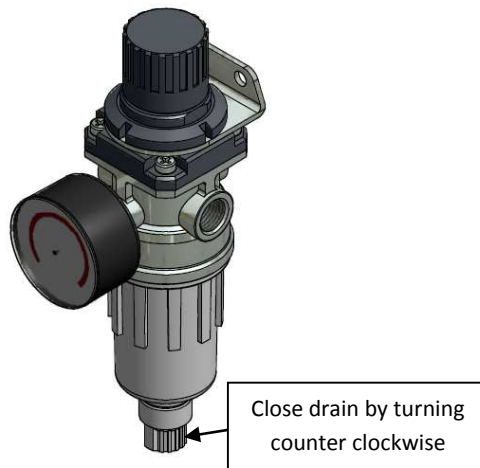
## Title: Maintenance of filter regulators

### 7. Execution:

#### 7.1. This step is for Camozzi and Parker filter regulators.

Locate the filter regulator and check if the clear bowl of the filter regulator is not full. When full the filter regulator won't be able to clean the air. When any level of contamination (water/oil) is present, press the bottom release drain nipple upwards, until the clear bowl is empty. This can be done with pressure on the system. When the clear bowl contains lots of dirt and other impurities, depressurize the system and remove the clear bowl. The filter element can only be cleaned with petrol or paraffin and must be completely dry before reassembly. The clear bowl should only be cleaned with warm water.

#### 7.2. This step is only for Camozzi filter regulators, not for Parker.



The Camozzi filter regulator is semi-automatic, meaning the filter will drain itself when the pneumatic pressure drops below 0.3 bar (4.3 PSI) and when the drain is also turned open. It is advised to always keep the drain closed so the drain will not spill dirt over vital parts of the bus, depending on the filter regulator location.

#### 7.3. This step is for Camozzi and Parker filter regulators.

Check if the pressure of the pneumatic system is between  $7.5 \pm 1.5$  bar. If not then readjust the pressure setting on the filter regulator.